

# Passageways:

## Songs of Connection, Abnormal & Sublime



The Singing Tree, Mixed Media & Acrylics,  
Amy Oestreicher

Written, Performed & Composed by  
Amy Oestreicher

Musical Direction & Arrangements by Bob Goldstone

Direction by Shellen Lubin

Video Production Design by Shannon Epstein

SubletSeries@HERE - Mainstage @ HERE Arts Center

145 6th Ave, New York, NY 10013

August 6th, 7th, and 8th.

This production is a part of SubletSeries@HERE: Co-op, HERE's curated summer rental program, which provides artists with subsidized space and equipment, as well as technical support.

Passageways is part of LoveMyDetour: An LLC committed to transforming communities by inspiring people to open their minds and reframe their view of "detours" into a new direction for life through education, expression, and engagement.

Sharing our stories through creativity, we gain adaptability and create a positive, empowered attitude toward obstacles, physical or mental struggles, transitions, and trauma.

For more information, contact [LoveMyDetour@gmail.com](mailto:LoveMyDetour@gmail.com)

**This original solo fantastical multimedia musical follows a young woman creating a world of her own design after a decade of physical and emotional trauma, utilizing song, mixed media artwork, and humor as a way through the most unexpected passageways.**

## **MUSICAL NUMBERS**

MY DREAM

(Amy wakes up to the world.)

BREATHE IT IN

(Amy revels in nature.)

MY DREAM - PART 2

(Amy tries to find a mentor, teacher, and guide.)

RUNNING, RUNNING

(The teacher takes advantage of his position and power.)

KEEP MOVING

(In the face of the abuse, Amy shuts down.)

I SEE YOU

(No matter where she is, his face is there with her.)

CIRCLES

(Her life and mind are spinning in circles.)

HOW DARE YOU

(She has gotten weaker on the outside, but inside she is raging.)

The Sky is Blue

(Amy finally tells her mother.)

COMA INTERLUDE

(Amy is rushed to the hospital in pain. Her stomach explodes.)

DEAR LITTLE ONE

(She is finally safe from the predator, but in a new world of physical hell.)

BLIP IN TIME

(Amy cannot eat or drink and is at her wits' end.)

GETTING ON THE TABLE

(They are going to rebuild her stomach and save her.)

OCTOBER

(The surgery doesn't work and she still can't eat.)

FALLING SNOW

(Years pass. Amy is losing hope after years of unsuccessful surgeries.)

PICTURE FRAME

(Amy creates a new place in the world for herself.)

GREEN GREEN GRASS/BREATHE IT IN

(With a fierce determination, she forges a path forward.)

*Music & Lyrics by Amy Oestreicher  
Arrangements by Bob Goldstone*



**Amy Oestreicher** (creator/performer) is an Audie award-nominated playwright, performer, and multidisciplinary creator. A singer, librettist, and visual mixed media artist, she dedicates her work to celebrating everyday miracles, untold stories, and the detours in life that can spark connection and transform communities. Amy overcame a decade of trauma to become a sought-after PTSD specialist, artist, author, writer for The Huffington Post, international keynote speaker, RAINN representative, and health advocate. She has given three TEDx Talks on transforming trauma through creativity, and her story has appeared on NBC's Today, CBS, Cosmopolitan, Seventeen Magazine, The Washington Post,

Good Housekeeping, and MSNBC, among others. Amy has toured her autobiographical musical, Gutless & Grateful, to over 200 venues from 54 Below to Barrington Stage Company since its 2012 NYC debut, as well as a mental health program for colleges, conferences and organizations. She is currently developing her full-length play, Flicker and a Firestarter, which just had its first AEA Staged Reading, and More Than Ever Now, a play based on her grandmother's story of survival. Her mixed media art is currently exhibited in Palettes of Sisterhood in Stamford, Connecticut. She has recently published her memoir, [My Beautiful Detour: An Unthinkable Journey from Gutless to Grateful](#).

As the 2014 Eastern Regional Recipient of Convatec's Great Comebacks Award and WEGO Health "Health Activist Hero", and WeGO Health Expert, medical community, speaking for National WOCN conferences and the American College of Surgeons Clinical Congress, and writing for the official print publication of the UOAA. She has devised programming for the Transformative Language Arts Network National Conference, the Eating Recovery Foundation, the 40th Anniversary New England Educational Opportunity Association Milestones Conference, three Annual National Mental Health America Conference, and others.

As a playwright, Amy has received awards and accolades for engaging her audiences in dynamic conversation on trauma's effects on society, including Women Around Town's "Women to Celebrate" 2014, BroadwayWorld "Best Theatre Debut," Bistro Awards "New York Top Pick, and the "Singular Award" at the Sarasolo Theatre Festival, presented annually for a "performance that is exceptionally uncommon, groundbreaking, original and inventive." Amy has performed excerpts of her solo oral history Play, Divers, as part of Brooklyn's immigrants and Exile, Beechwood Art's Giving Voice, Dixon Place, Seehonk Storytelling Television Special, and Museum of Jewish Heritage Festival of Untold Women. She is a cabaret and theatre reviewer for BroadwayWorld, Her theatre education essays and monologues have been published in Creative Pedagogy journals, as part of a theatre curriculum for high school students in the Philippines. Her play, "We Re-Member" honoring the immigration stories of her grandparents, has been performed in twelve states, and her full length Play, Factory Treasure, has been performed at the Philadelphia Arts Center, Identity Theatre, LIU, The Depot, and Actors Theatre of Newburyport. Her short plays have been published by the Eddy Theatre Company and finalists in Manhattan Repertory Theatre's Short Play Festival, as well as NYC Playwright's Women in the Age of Trump. She is a strong advocate for arts integration and education.

Amy's collaboration with Beechwood Arts on the immersion salon, "Resilience and the Power of the Human Spirit", has traveled around the world to health and arts facilities as a public installation, incorporating her monologues, art, writing and recipes to express the life-altering detours and ultimately the invaluable gifts of her resilient journey. Amy is also an active artist and teacher in the Jewish community, being honored by United Way in 2005 for her music programs at Hollander House, completing artist residencies at Art Kibbutz, and delivering "Hope, Resilience & Biblical Women" keynotes for synagogues and religious schools. She is a teaching artist with Brooklyn's Community World Project, and trained ACTSmart, a Playback Theatre troupe in Amherst, MA. She is also a passionate arts education advocate, a successful mixed media visual artist, a continuing education studio arts teacher, and her art work has been shown in esteemed galleries in Massachusetts, Connecticut, Chicago, San Diego and New York, as well as published in national publications including Conquer, Topology and Cargo Literary. See more at [www.amyoes.com](http://www.amyoes.com)

# SUBLET SERIES @HERE 2018-19 SEASON

#HERE  
@HEREARTS



## Welcome!

Thank you for coming to *Passageways: Songs of Connection, Abnormal and Sublime*, a SubletSeries Co-Op presentation. This program provides artists with discounted space and equipment, as well as technical support.

HERE also supports the work of artists at all stages in their careers through our HERE Artist Residency Program (HARP), which develops and produces the work of our 10-13 resident artists, and Visiting Artist presentations for adult and family audiences. Please check out our other performances and events at [HERE.org](http://HERE.org).

Like all the work at HERE, this SubletSeries Co-Op presentation was curated based on the strength and uniqueness of the artist's vision.

We hope to see you HERE again soon.

Best,

**KRISTIN MARTING**  
Founding Artistic Director

## SUBLETSERIES CO-OP

Check out the [full line-up](#):  
NOW - SEP 1

### HERE SUPPORT

HERE is extremely grateful for the support and encouragement of an important group of Foundations, Corporations, Government Agencies, Elected Officials, and dedicated individuals. We would not be HERE without them.

### GOVERNMENT SUPPORT

HERE'S programming is made possible with Public Funds from: National Endowment for the Arts; New York State Council on the Arts, with the support of Governor Andrew Cuomo and the New York State Legislature; New York City Department of Cultural Affairs in partnership with the City Council, Office of the Mayor of New York, and Speaker Corey Johnson; The Office of Manhattan Borough President Gale Brewer; and New York State Assembly Member Deborah J. Glick. We are extremely grateful for the support and advocacy of all of our dedicated elected officials: Senator Charles E. Schumer, Senator Kirsten R. Gillibrand, Representative Jerrold L. Nadler, Governor Andrew M. Cuomo, Mayor Bill de Blasio, Manhattan Borough President Gale Brewer, Council Member Jimmy Van Bramer and the Cultural Affairs Committee of the City Council, and State Senator Brad M. Hoylman.

### PRIVATE AND CORPORATE SUPPORT PROVIDED BY

Alliance of Resident Theatres/ New York, Axe-Houghton Foundation, Booth Ferris Foundation, Edison Properties, Fund for the City of New York, Howard Gilman Foundation, Jerome Foundation, Inc., Jim Henson Foundation, Joseph and Joan Cullman Foundation for the Arts, Leon Levy Foundation, mediaThe Foundation, Mental Insight Foundation, Mertz Gilmore Foundation, New York Foundation for the Arts, Select Equity Group, Inc., The Andrew W. Mellon Foundation, The Barbara Bell Cumming Charitable Trust, The Fan Fox and Leslie R. Samuels Foundation, The Scherman Foundation, The Shubert Foundation, Venturous Theater Fund of the Tides Foundation, Virginia B. Toulmin Foundation

HERE, in partnership with Resident Playwright Taylor Mac, is a participant in the Mellon Foundation's National Playwright Residency Program administered in partnership with HowlRound. HERE is a proud member of the Hudson Sq Connection & Lower Manhattan Arts League & The National Opera America Center & TCG.



Set & Mixed Media Art . . . . . Amy Oestreicher  
 Stage Manager . . . . . Miriam Salzman  
 Press . . . . . Off Off PR  
 Choreography . . . . . Cheryl Carpio  
 Hair and makeup . . . . . Jennifer Snowdon  
 Lighting & Program Design . . . . . Zija Lubin-West

**Bob Goldstone** (Music Direction & Arrangements) His career has spanned the Music Theater, Classical, and Pop worlds. On Broadway, he was pianist for *Evita* and assistant musical director for *Charlie and Algernon*. Off-Broadway, he was musical director and arranger for *Asylum*, *Tallulah Hallelujah*, *Kleynkunst!*, *Bubbe Meises* (also on PBS-TV), *Das Lusitania Songspiel*, *Guilt Without S\*x*, *The Coolest Cat in Town*, and pianist for the *Radio City Christmas Spectacular* and *The Knife*. Bob has worked with many top cabaret and nightclub performers including Karen Akers, Tovah Feldshuh, Eileen Fulton, Eddie Fisher, Liliane Montevecchi, Bruce Adler, Dick Shawn, Estelle Parsons, and lyricists Sheldon Harnick and Carolyn Leigh. Bob arranged, orchestrated, and conducted the score for the feature film "High Stakes," and has orchestrated many shows including Joe Raposo's *The Little Rascals*, *Asylum*, Bob Merrill's *Hannah 1939*, Michel Legrand's *A Christmas Carol*, *The Housewives' Cantata*, Sheldon Harnick's *Dragons*, and *The Phantom Tollbooth*. Bob graduated cum laude from Yale, where, as an undergraduate, he worked on many shows at the Yale Drama School including Stephen Sondheim's *Frogs* at the Yale Swimming Pool, and was accompanist for the New Haven Opera. Bob has played orchestral piano with both the 92nd St. Y and Centre Symphonies, was the featured piano soloist in a concert celebrating the work of Vladimir Heifetz, and played in chamber music recitals at the Mannes School of Music. He recently arranged and orchestrated a symphonic-pops concert for violinist/singer/pianist/acrobat Janice Martin.

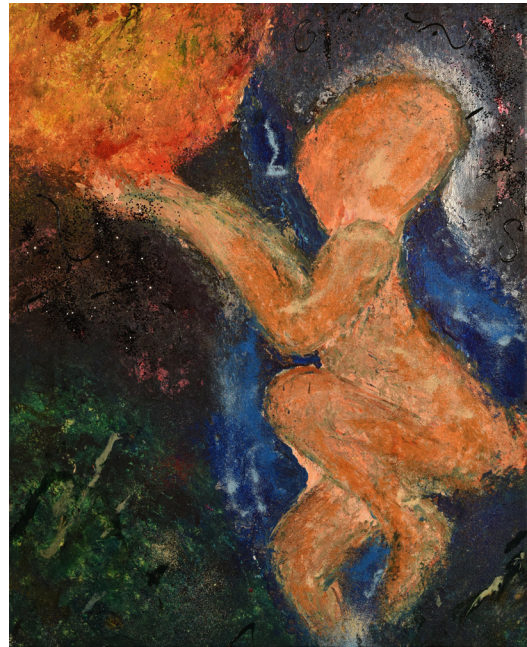
**Shellen Lubin** (Director) works professionally as a Director, Playwright, Songwriter, and Actor/Singer. Her plays have been produced and workshopped at Manhattan Class Company, the Public Theatre, Pacific Resident Theatre, Hubbard Hall, West Coast Ensemble, American Jewish Theatre, and more. Her songs have been featured on radio and cable TV; in Milos Forman's first American film, "Taking Off;" in numerous cabaret acts including her own; and in a one-hour special on WBAI-FM, *Shellen Lubin - Songwriter/Singer*. As a director/dramaturg assisting in the development of new plays, she has directed across the country--currently working on projects with Stuart Warmflash, Lanie Robertson, Susan Cinoman, and Amy Oestreicher--most recently at the Pawling Theatre Exchange and in the Playwright Directors Workshop of the Actors Studio--and is the resident director for the *Bistro Awards* for Sherry Eaker, Producer. She also teaches and coaches actors, singers, and writers both privately and as a guest artist. As the Artistic Director of *Untold Stories of Jewish Women*, she helmed a three-day theatre festival at the Museum of Jewish Heritage in March 2018. As an advocate for women+ in theatre, she is the incoming Co-President of the League of Professional Theatre Women, the 1st Vice President and Past President of the Women in the Arts & Media Coalition, and chair of the Women Playwrights Initiative for the National Theatre Conference. Her reflections on artistry and life have been featured in five cover pieces for *Back Stage Publications* (archived on her website) and are read weekly in her *Monday Morning Quotes* think-pieces ([www.mondaymorningquotes.com](http://www.mondaymorningquotes.com)). Proud member of DG, SDC, AEA, and more. [www.shellenlubin.com](http://www.shellenlubin.com) @SHLubin

**Miriam Salzman** (Stage Manager) Broadway: *Waitress*, *Finding Neverland*. Off-Broadway: *Missed Connections: A Craigslist Musical*. Immersive: *Seeing You*, *Curiosities*. Selected Readings: *Initiative*, *Fat Kid Rules the World*, *A Walrus in the Body of A Crocodile* (Playwrights Realm), *Republic*. Events: *International Emmy Awards*, *American Theatre Wing Gala*, *Broadway Bares*, *Broadway Barks*. Ithaca College, The Juilliard School Professional Internship Program.

Special Thanks: Marianne Gunther (NYATA), Marilyn Oestreicher, Adam Oestreicher, Triad Theater and Dixon Place for assisting in the development of Passageways, and the fabulous company @ HERE including: Kristin Marting, Aislinn Curry, Kate August, Julia Levine, and Richard Stauffacher.



Holding Her World, Mixed Media & Acrylics,  
Amy Oestreicher



The Body Reborn, Mixed Media,  
Amy Oestreicher



Beach Scene, Mixed Media,  
Amy Oestreicher



**Publicity & Marketing Communications  
for Developing Theatrical Productions**

Established. Connected. Engaged.  
Get Results!

Contact: Paul Siebold ◦ [paul@offoffpr.com](mailto:paul@offoffpr.com) ◦ 646-484-9633 ◦ [www.offoffpr.com](http://www.offoffpr.com)