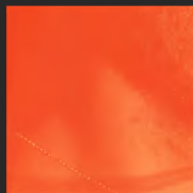


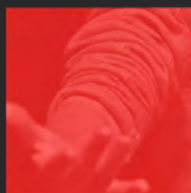
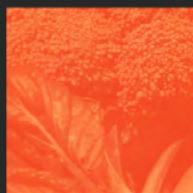
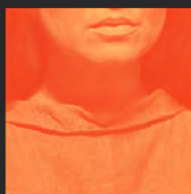
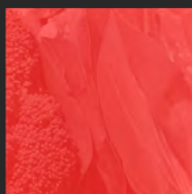
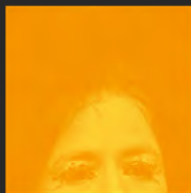


HERE **RESIDENT**
ARTIST
WORKS



A MEAL

JULY 22-23



XIMENA GARNICA + SHIGE MORIYA

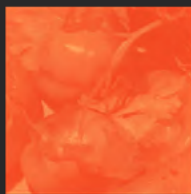


TABLE OF CONTENTS

Click on any section below to jump to the page.

LAND ACKNOWLEDGEMENT

SHOW INFO

CREDITS

BIOS

MENU

RESIDENCY PROGRAM

HERE STAFF

FUNDING

MEMBERSHIP

SURVEY / FOLLOW US

HERE RESIDENT HERE ARTIST HERE WORKS

Though the pandemic is still very much a reality, we are thrilled to continue supporting artists, and to offer a window into the creative process of our nationally recognized **HERE Artist Residency Program (HARP)**. The 2022 program features workshop presentations at various stages of development that blur the boundaries between theatre, music, dance, new media, and visual art. Whether you can join us physically – masked, distanced, and partially outdoors – or virtually from the comfort of your own home, we look forward to welcoming you to this year's **HERE RAW / Resident Artist Works!**

LAND ACKNOWLEDGEMENT

Manhattan has always been a gathering and trading place for many Indigenous peoples. HERE pays respect to all of their ancestors past, present, and future. We acknowledge that this theater, and this work, is situated on the island of Manhahtaan (Mannahatta) traditional lands of the Lenape, the Manahatin, the Canarsie, the Shinnecock, the Haudenosaunee and the Munsee. We respect that many Indigenous peoples continue to live and work on this island and acknowledge their ongoing contributions to this land. We offer our care, gratitude and welcome.

Inspired by the words of Adrienne Wong: HERE also acknowledges the legacy of colonization embedded within the technology, structures, and ways of thinking we use every day. This production is using equipment and high-speed internet, not available in many Indigenous communities. Even the technologies that are central to much of the art we make leave significant carbon footprints, contributing to changing climates that disproportionately affect Indigenous people worldwide. We invite you to join us in acknowledging all this, as well as our shared responsibility to make good of this time and for each of us to consider our roles in reconciliation, decolonization, and ally-ship.

ABOUT THE SHOW

HERE presents

A MEAL

A work-in-progress presentation for **HERE RAW / Resident Artist Works**

In an intimate setting, a small group of attendees share in a communal journey traced by food. Part art installation, part ritual, part laboratory, part meal, and part conversation, this poem for the senses creates space for friends and strangers to eat together, while reflecting on our post-industrial relationship with food. With the state of divisiveness and partisanship that's rampant in the U.S. at the moment, *A Meal* opens a space to create new relationships while questioning through art the structures and environmental challenges of food in the anthropocene.

This year's encounter will take place on HERE's Mainstage and is dedicated to NYC street vendors. The performances will catalyze two different conversations. On 7/22, we will talk about "Food Autonomy: Reflections on Production, Distribution, Preparation, Consumption, and Power." On 7/23, we will discuss "Policy and NYC Street Food Vendors: Criminalization of Labor of Historically Excluded Workers."

The team for this year's work-in-progress includes: LEIMAY Artistic Co Directors Ximena Garnica & Shige Moriya, LEIMAY Ensemble members and guests: Masanori Asahara*, Nixon Beltran, Krystal Copper*, Paige Cowen, Jeremy Goren, Melani DeGuzman, Thea Little, Brandon Perdomo, Drew Sensue-Weinstein, Yolanda Tianyi-Shao, Jeremy Slater, and Community Members and Activists Mohamed Attia (Street Vendor Project), Kelebohile Nkhereanye, Julie Torres Moskovitz, Jason Trachtenburg (4th Street Food Co-op), and others to be announced.

**Core Ensemble Member*

CREDITS

HERE presents

A MEAL

A work-in-progress presentation for **HERE RAW / Resident Artist Works**

DIRECTION, CHOREOGRAPHY, LIGHT, SCENIC AND FOOD DESIGN

Ximena Garnica and Shige Moriya

COMPOSITION AND SOUND DESIGN

Drew Sensue-Weinstein

PERFORMANCE BY THE LEIMAY ENSEMBLE AND GUESTS

Masanori Asahara*, Nixon Beltran, Krystal Copper*, Paige Cowen, Melani DeGuzman, Drew Sensue-Weinstein, Yolanda Tianyi-Shao, Jeremy Slater

**Core Ensemble Member*

COSTUME DESIGN BY

Ximena Garnica and Irena Romendik

ENCOUNTER #5 OUTREACH & RESEARCH COORDINATORS

Jeremy Goren and Brandon Perdomo

PRODUCTION & CREATIVE INTERN

Yolanda Tianyi-Shao

GUEST SPEAKERS

Food Autonomy: Reflections on Production, Distribution, Preparation, Consumption, and Power

Tiana Rainford, East NY Farms!

Jason Trachtenburg, 4th Street Food Co-op

Policy and NYC Street Food Vendors: Criminalization of Labor of Historically Excluded Workers Speakers:

Mohamed Attia (Street Vendor Project)

Kelebohile Nkhereanye

Julie Torres Moskovitz

NYS Senator Jessica Ramos

Conversation Moderators: Ximena Garnica and Jeremy Goren

Commissioned, developed, and produced by **HERE**

Co-Produced by LEIMAY Foundation

RUNNING TIME | 90 MINUTES

SPECIAL THANKS FROM SHIGE AND XIMENA

Thank you to HERE, their staff and board for all the support they have given us throughout the years. Thanks to all our collaborators for their continued curiosity, passion and actions, and also to our families and dear ones for supporting us all in this journey of playing, questioning and transforming.

LEIMAY FUNDING

LEIMAY work and programs are supported, in part, by the New York State Council on the Arts, the New York City Department of Cultural Affairs in partnership with the City Council, Mertz Gilmore Foundation, and many generous contributions from individual donors.

LEIMAY ENSEMBLE BIOS

XIMENA GARNICA AND SHIGE MORIYA | DIRECTORS, CHOREOGRAPHERS, AND DESIGNERS

are a Colombian and Japanese multidisciplinary artist duo. Their collaborative works manifest as live installations, performances, and sculptures that are presented in theaters, museums, galleries, and public spaces. Alongside their performative work, Ximena and Shige also invest their energy in critical research, printed and digital publications, and community projects. Shige and Ximena are the co-founders and artistic directors of LEIMAY and the LEIMAY Ensemble. The word LEIMAY is a Japanese term symbolizing the changing moment between darkness and the light of dawn, or the transition from one era to the other. Ximena and Shige work out of their home studio CAVE, which is located in Williamsburg, Brooklyn. Their work has been presented at a number of art spaces including: BAM, The New Museum, The Brooklyn Museum, The Watermill Center, HERE, Japan Society, and The Asian Museum of San Francisco. In 2018, they were nominated for the USA Artists Fellowship and the Herb Alpert Award. They have been part of the Bessie Schonberg Individual Choreographers Residency at the Yard, the Watermill Center Residency Program, and the HERE Artist Residency Program. Ximena was a recipient of the Van Lier Fellowship for extraordinary stage directors, and she was recently a Distinguished Visiting Professor at the University of California Riverside. Her article "LEIMAY, CAVE, and the New York Butoh Festival" was recently published in *The Routledge Companion to Butoh Performance*. Their work is rooted in questions of being, perception, interdependency, and coexistence. They look to expose the multiplicity of spatial and temporal intervals that exist within the body, between materials and environments. They are curious about what emerges when the stability of habits, affirmation of binaries, social norm expectations, and the crystallization of identity dissolve and expose the potentialities of being.

LEIMAY ENSEMBLE

is a group of national and international dancers and performers who create body-centered works around the principle of LUDUS, a practice that explores methods to physically condition the body of the performers and develop a sensitivity to the "in-between space." Ensemble members are selected through a workshop audition process. Current core Ensemble members include Masanori Asahara, Krystel Copper, Mario Galeano, and Andrea Jones. Founded in 2012 by Ximena Garnica and Shige Moriya, the group took form through the creation of the Becoming Series pentalogy, of which three parts have been created: *Becoming Corpus*, *borders*, and *Frantic Beauty* (Brooklyn Academy of Music, 2013-2017). The group holds a regular practice at their studio in Brooklyn where they engage in the creation of new work in addition to teaching, training, research, and distillation of years of direct transmission of embodied knowledge by Japanese Butoh pioneers, Noguchi Taiso practitioners, and Experimental Theater innovators. Leimay.org

MASANORI ASAHARA* | PERFORMER

is a Japanese born dancer, choreographer, certified yoga teacher, and improvisation artist based in Brooklyn, New York. Masanori has been a core member of the LEIMAY Ensemble since 2010. He has toured, taught, and performed with the ensemble for over a decade participating in *Becoming Series* at BAM Fisher [*Becoming Corpus* (2013), *borders* (2015), *Frantic Beauty* (2016)], *Alius Bodies* (2018), *Bodies on the Brink*, *Unplugged*, *Thresholds*, among other works. He is currently finishing Dharma Yoga teaching training, and working on developing new curriculums for LEIMAY LUDUS. He has worked for choreographers Kota Yamazaki, Isabel Gotzkowsky, and Nathan Trice, and has collaborated with visual artists, installation artists, musicians, filmmakers and multimedia artists in a variety of projects.

KRYSTEL COPPER* | PERFORMER

joined LEIMAY as a member of the performance and research ensemble in 2016 for the premiere of *Frantic Beauty* at BAM. She is a second-generation immigrant artist born to parents from Argentina and Portugal. Krystal holds a B.A. in Dance from the University of Maryland. She has performed with Amanda+James, Gesel Mason Performance Projects, B3W, Anahata Dance, CircuitDebris, Caenis at Pace, Estado Flotante, and Not for ReTALE, as well as presented her own work at DNA (2012), and ECHT Vision (2019) in collaboration with Ron Copper. Krystal has been contributing to the development of LEIMAY LUDUS and is currently training to be a LUDUS teaching artist.

BRANDON PERDOMO | PERFORMER AND STORYTELLING FACILITATOR

has been a guest performer in recent LEIMAY projects including *A Meal* (in-progress) and *Correspondences*. He also works as Admin Associate at LEIMAY managing some of its programs and setting the foundation of the archive project of LEIMAY's history. Brandon is an interdisciplinary artist from New York, fascinated with self-reflection and alterity, which are the engines of his performances and images. Interested in contemporary politics and minorities, as well as in the intricate manners in which the body is perceived in the public sphere, he channels his aspirations towards social activism, mirroring his non-profit work in the NGO communities and time spent as an anti-bias educator, which seem to have reemerged into his more recent creative work – since behind his coherent practice lies a healthy dose of thought and research, as well as the ambition to tackle some serious philosophical questions about human existence and, as he says, "I share my world with others, and I need worlds to be shared with me." Brandon received his MA in Oral History at Columbia University.

IRENA ROMENDIK | PERFORMER AND COSTUME DESIGN

first joined the LEIMAY ecosystem as an audience member and as a participant in numerous LUDUS classes. She has co-designed and fabricated costumes for LEIMAY's projects for the past nine years. Irena has also performed in LEIMAY projects including: *A Meal* (In-Progress), *In Illo Tempore Vinnegets* (2015,2016,2017), and *Dimple* (2011). She has been a LEIMAY Fellow (2016-2017) with her own work as a visual artist collaborating with movement-based performers. Irena arrived from Ukraine two decades ago and currently resides

in Brooklyn, New York. She holds degrees from Shevchenko Art School in Kiev, Pratt Institute, and Tisch School of the Arts, NYU. Irena values the process of artistic creation over production. Her multidimensional interests have produced projects that cross disciplines, and sometimes are difficult to categorize. To learn more about her work please visit <http://www.aquarelle.us>

JEREMY D. SLATER | COMPOSITION AND SOUND DESIGN FOR A MEAL PERFORMANCE

has worked with LEIMAY in several projects since 2009, creating original soundscapes for performances and installation works including: *Floating Point Waves* (2012), *The Point* (2013), *In Illo Tempore Vinnegets* (2014, 2015, 2016, 2017) among others. He is an intermedia artist working in the areas of sound, video, computer art, performance, installation, and words. Born in Reading, England and a graduate of both SUNY College at Buffalo and School of Visual Arts with an MFA in Computer Art. Performances include sound and live performed video that is ambient and sometimes interactive/reactive. Video work includes single and multiple channel videos for screening and installations with sound and ephemeral sculpture. He was one of the 1999 recipients of the Computer Art Fellowship from New York Foundation of the Arts (NYFA) and has attended the Experimental Television Residency, and was artist in residence at Seoul Art Space_Geumcheon in Seoul, South Korea. www.jeremyslater.net

DREW WEINSTEIN | COMPOSITION AND SOUND DESIGN FOR A MEAL PERFORMANCE

is a New York based theatre and sound artist. He has created original works which have been presented at venues including HERE Arts Center, JACK, The Brick, The Hive, Jersey City Theatre Center, and LEIMAY's SOAK. Drew has also directed works at The New Ohio Theatre, The Wild Project, Vital Joint, The Shakespeare Theatre of New Jersey, and Dixon Place among others. As a designer, Drew's work has recently been heard around NYC and the east coast at venues including Under the Radar at the Public Theatre, Abrons Arts Center, HERE, Signature Theatre Center, BRIC, the Shakespeare Theatre of New Jersey, Corkscrew Theatre Festival, Triskelion Arts, Long Island University, Anacostia Arts Center (DC), Plays and Players (Philadelphia), and the Performing Garage.

GUEST ARTISTS BIOS

NIXON J. BELTRAN

is a Colombian, born movement-based performer, gardener, passionate cook and becoming a book-object maker, moved to the U.S. 35 years ago after growing up in several countries throughout South America. His early education, using yoga, Montessori and Piaget educational methods, inspired him to study dance and choreography composition at the Martha Graham School for Contemporary Dance in New York City. After graduating from its professional program in 1995, he choreographed and presented his own work locally and internationally. He also participated and collaborated in other choreographers'

and artists' works. In 2002, Nixon was invited to take part in Robert Wilson's Watermill Center International Summer Program in the hamlet of Water Mill, NY. He had the opportunity to learn and work artistically in different staging, design, exhibition projects and gardening under the direction of Mr. Wilson and his core team of collaborators. The Watermill Center officially opened to the public as a center for the arts and humanities in 2006. Nixon was offered the position of Center Manager to continue his work establishing the gardens and grounds, as well as help launch its artists-in-residency, public and educational outreach programming. He held this position until February 2021. After leaving the Watermill Center, Nixon renewed his focus on artistic endeavors, developing his skills in the making of book-objects (aka, one-of-a-kind bookworks).

PAIGE COWEN

is a gender-fluid, Brooklyn based movement & research artist. They began training in Oklahoma under the direction of Kristin McQuaid, Joshua Stayton and José Antonio Checa. Paige continued their training in New York at Marymount Manhattan College, where they graduated with a degree in Dance Studies and a minor in Environmental Studies. Paige has performed works by Celia Rowson-Hall, Michael Thomas, Nancy Lushington and Andrea Markus. In addition to their studies at Marymount, Paige has expanded their movement practice under the instruction of artists such as Andrea Miller, Jennifer Monson, Alexandra Beller and Ximena Garnica, to name a few. Most recently, Paige has had the pleasure of creating with Arsenal Movement dance project, The Lowcoco, Accent Dance NYC and the LEIMAY Ensemble. They are interested in collaborations that combine unexpected techniques, mediums and practices to create thought provoking and change-making work. Paige believes in the power of the body as a tool for research that can build a bridge between the efforts of creatives, policy makers, activists and scientists to shape a more sustainable and equitable world. Their choreography has been presented at film festivals, virtual shows and on the stage through presenters such as The Tank, The Craft, and 7Midnights Physical Research.

JEREMY GOREN

is a theatre artist, primarily in devised works, with a focus on experimental, socially focused performances and hybrid events. Formerly a longtime collaborator with Terra Incognita Theater and the U.S.-based projects of The Workcenter of Jerzy Grotowski and Thomas Richards, Jeremy works as lead artist in Wistaria Project and a Co-Artistic Director of AnomalousCo -- as well as with other artists and organizations. He's currently in development of Saviana Stanescu's *Zebra 2.0*, Target Margin's *Here & Now* oral-storytelling project in Sunset Park, and further iterations of AnomalousCo's (*beyond*) *Doomsday Scrolling*, a performance event to raise funds and awareness for refugees from Ukraine and around the world. He has a background in journalism and youth development and earned a MFA in Performance and Interactive Media Arts from Brooklyn College. www.jeremygoren.com

MELANI DE GUZMAN

is a Filipinx multi-hyphenate performer, actress, and integrative specialist committed to the life-long process of unlearning and unteaching oppressive,

othering, and superficial ways of moving. Melani graduated from Loyola Marymount studying dance and sociology. She has trained in a variety of movement forms to enrich her cultural studies of various backgrounds. Melani integrates her eclectic practices of mysticism, somatic, healing work into collaborative partnerships creating site-specific solo works, dance films, and movement offerings. She is now residing in Brooklyn NY, and loves to surf, pole dance, cook, and host sound healing baths.

THEA LITTLE

is a Brooklyn-based interdisciplinary artist whose work draws upon performance art, dance, and experimental opera. She has composed more than 50 scores presented in the U.S. and abroad. Thea attended the School of American Ballet and holds MFA and BA degrees in Dance respectively from Hollins University and Columbia University. Thea has performed in the U.S. and Europe with New York City Ballet, The Whitney Museum, The Traveling Trolley in Kingston and WUK in Vienna. Thea has worked with Neta Pulvermacher, Todd Williams, Moving Theater, Panoply Lab, Anaïs Maviel, Feminist Art Group (FAG), and Shen Wei Dance Arts. She recently presented a sold-out evening-length performance *Honest Process* at National Sawdust as part of her residency in 2018-2019 and two sold-out performances of *Extraordinarily Inverse* at the Center for Performance Research in 2018.

YOLANDA TIANYI-SHAO

Yolanda Tianyi Shao is a Chinese creator and choreographer. She works interdisciplinary with animators, composers, theater directors, actors, film makers, sound designers and photographers. Yolanda has her own specific standpoint of art making. With her background of years of dance training, she lost her interest in pursuing simply beautiful and identified dance movement, her work more deals with the extremes of human communication, physical theatrical performances where a literal dialogue occurs through movement and she also moved her steps into site-specific arts in recent years. She is interested in making work in the context of exploring the possibilities of the relationship between human and nature and deals with issues of the environment. In 2017 she created a group dance work called *SALE*, it's about the material desires expanding in people's life, people running for it, even tearing at each other. Some people are crazy about it, but behind the satisfaction is a boundless emptiness, while some people have the heart to withdraw, but they are more than enough. Behind the phenomenon, desire silently watches the picture of constant collapse and reconstruction, as well as the social landscape of ephemeral bliss. And then she made an experimental community version of this work in the summer of 2018 with an artist from Goldsmiths. In 2021, Yolanda created a project *Ebb Tide* in the Open House Concert at CalArts. She starts her collaboration with animators and composers in the piece *Futile/Gestures* in the later 2021. In the same year, she created a movement piece *Breaking the Persona* that was inspired by a female photographer Wanyue An's works. It performed in the exhibition *My Next Incarnation* that was curated by Yiwei Lu on March 19th in Los Angeles Keystone Art Space. She holds a bachelor of Dance from Nanjing Normal University in China and is currently pursuing the Master of Fine Art in Choreography at the California Institute of the Arts.

GUEST SPEAKERS BIOS

Policy and NYC Street Food Vendors: Criminalization of Labor of Historically Excluded Workers

MOHAMED ATTIA

is the Managing Director of the Street Vendor Project at the Urban Justice Center (SVP), a 2,800+ member-strong organization that champions the rights of street vendors as small businesses to earn a living and contribute to the culture and life of New York City. Attia migrated to the US from Alexandria, Egypt, in 2008 working as a street vendor for nearly ten years selling hot dogs, halal chicken over rice, and smoothies in Times Square. He joined as a member of the Street Vendor Project (SVP) in 2012 and was an elected member leader of the organization until 2018, when he joined SVP's staff as Managing Director. Attia championed legislation passed in 2021 by the New York City Council that expanded the number of permits available to street vendors for the first time in nearly 40 years. He has been profiled for his advocacy work on behalf of the street vendor community by The New York Times, Crains New York, and was recognized on City & State Community Engagement Power 50 List. Through direct legal representation, small business development training, grassroots organizing, leadership development, and strategic legislative advocacy, the Street Vendor Project builds power and community among vendors. Learn more about SVP at <http://streetvendor.org/>

KELEBOHILE NKHEREANYE (KELE)

is a food street vendor, food justice activist, community chef and leader in East New York. Kele is an immigrant from Lesotho, Southern Africa, where she learned the values of street vendors as opportunities toward economic empowerment. Currently, Kele works as a Station Agent for NYCTA. She is a committed member of SVP supporting efforts advocating for street vendors to remind New Yorkers to think of vendors as small business owners who need to work to support their families. She graduated from MCNY with MPA, Hunter College with Sociology and Women's Studies.

JULIE TORRES MOSKOVITZ, AIA

is an architect and founder of Fete Nature Architecture, PLLC (FNA) based in NYC. She began working with SVP in 2015 to help envision an exemplary commissary for the street vendor community. Her firm FNA is a vital, collaborative architecture firm whose process is founded in research and investigation of new ways to inhabit the urban fabric. Julie is the author of *The Greenest Home* on sustainability and she is the architect of the first certified Passive House project in NYC. She believes that life happens in the streets and reflects the city's spirit whether through street vendors, block parties, impromptu run-ins, or protest for environmental and social justice.

JESSICA RAMOS

represents New York's 13th District in the State Senate, which includes the Queens neighborhoods of Corona, East Elmhurst, Jackson Heights, and parts of Astoria, Elmhurst, and Woodside. Ramos chairs the Senate Committee on Labor, where she's fought to pass historic legislation to grant farm workers basic labor protections, tackle the child care crisis, and secured \$2.1B to create a fund for workers who have been excluded from pandemic-related relief. Senator Ramos was born at Elmhurst Hospital to undocumented Colombian immigrants, grew up in Astoria, and now lives in Jackson Heights with her two sons.

Reflections on Production, Distribution, Preparation, Consumption, and Power

TIANA RAINFORD

is Co-Project Director at East NY Farms! She is a CUNY Brooklyn College graduate with a Bachelor of Science in Food and Nutrition Studies. Her interests in food sustainability and how food politics and culture affect one's access to preventative health care grew during her academic studies. She wanted to find a way to use her knowledge of food and nutrition to directly benefit her community of East New York. With ENYF, she combines her devotion to food justice in her community with her extensive knowledge in nutrition sciences to encourage food security in East New York.

JASON TRACHTENBURG

is best known for his role as "The Dad" in the long running Off-Broadway and Indie-rock act *The Trachtenburg Family Slideshow Players*. He has appeared on "Late Night with Conan O'Brian," MTV, VH1, and is a multiple time award winner at the Edinburgh Festival Fringe. He has received feature coverage in the New York Times, the Los Angeles Times, The Guardian, Pitchfork, N.M.E., Spin, and many more. He has given a T.E.D. talk, and his band's debut album (Vintage Slide Collections From Seattle, Vol. 1) reached #79 in the CMJ charts. His current musical, *Me and Lee - The Musical* is the authorized musical adaptation of the historical auto-biography of Judyth Vary Baker: Teen Science Superstar, witness to history, and secret girlfriend of Lee Harvey Oswald in 1963. Jason is the former President of the 4th St. Food Co-op in New York City.

MENU

HERBAL GOLD TEA: pineapple, lemon, lemon balm, lemon verbena, anise, cloves, sugar cane, panela

TAMALES: scallions, red onion, bell pepper, potatoes, carrots, jackfruit, garlic, cornmeal, olive oil, salt and pepper

CHIMAKI: burdock, lotus root, carrot, japanese yam, sticky rice, hijiki seaweed, shitake mushrooms

AREPAS: corn meal, salt, olive oil, scallions, red onion, bell pepper, mango, cilantro, parsley, vinegar, pepper

BEETS: beets, vegan mayonnaise, rice, quinoa, milett, black rice, oil, balsamic vinegar, tamari, orange, rime

SALMON: salmon, vegan mayonnaise, rice, quinoa, milett, black rice, oil, balsamic vinegar, tamari, orange, rime

PAPAYA DESSERT: papaya, cinnamon, cloves, sugar cane



HERE ARTIST RESIDENCY PROGRAM

Through the HERE Artist Residency Program (HARP), HERE commissions and develops new hybrid works over a 2-to-3 year period. As part of the HERE community of artists and audiences, our resident artists show works-in-progress, develop workshop productions, and mount full-scale productions. For 2021–22, HERE supports the following artists and projects:

Gelsey Bell

mɔːnɪŋ
[morning//mourning]

Shayok Misha Chowdhury

Rheology

Ximena Garnica & Shige Moriya | LEIMAY

A Meal

Grace Galu & Baba Israel | Soul Inscribed

Cannabis! A Viper Vaudeville

Maiko Kikuchi & Spencer Lott

9000 Paper Balloons

minor theater

Marie It's Time

Normandy Sherwood

Psychic Self Defense

Sachiyo Takahashi & gamin

The Emotions

Imani Uzuri

Songs of Sanctuary of the Black Madonna

Nia Ostrow Witherspoon

Priestess of Twerk

HERE & BACK

HERE & Back encompasses projects produced by HERE and helmed by established artists with deep connections to HERE. For audiences, HERE & Back provides the chance to experience daring performances by high-profile multidisciplinary artists in our intimate spaces; for the artists, HERE remains a special home for their work and a space open to risk-taking. For 2021–22, the following artists have developed HERE & Back projects:

Taylor Mac, Resident Playwright

The Hang

Kristin Marting & Suzi Takahashi

The Story Box

HERE STAFF

FOUNDING ARTISTIC DIRECTOR

Kristin Marting

PRODUCING DIRECTOR

Meredith Lynsey Schade

PROGRAMMING

Amanda Szegłowski, ASSOCIATE ARTISTIC DIRECTOR - RESIDENT ARTIST AND ONLINE PROGRAMS

Remi Harris, ASSOCIATE ARTISTIC DIRECTOR - SUBLET SERIES AND OUTDOOR PROGRAMS

Basil Twist, ARTISTIC DIRECTOR, DREAM MUSIC PUPPETRY

Barbara Busackino, PRODUCER, DREAM MUSIC PUPPETRY

Dan Halm, RESIDENT HEREART CURATOR

Haley Fragen, PROGRAMMING ASSISTANT

GENERAL MANAGEMENT

Anterrius Thomas, BUSINESS ADMINISTRATOR

Viktoria-Isabella King, COMPANY MANAGER

Emma Richmond, GENERAL MANAGEMENT ASSISTANT

MARKETING

Amanda Szegłowski, MARKETING DIRECTOR

Ariana Albarella, MARKETING MANAGER

Yasmin Santana, MEDIA AND BRANDING MANAGER

Sophie Schweik, MARKETING ASSISTANT

Matt Ross PR, PUBLIC RELATIONS

Moti Margolin, RESIDENT VIDEOGRAPHER

DEVELOPMENT

Isabella Rivera Ruiz, INDIVIDUAL GIVING MANAGER

Chiaoyi Chang, DEVELOPMENT ASSISTANT

PRODUCTION

Cole Bonenberger, PRODUCTION MANAGER

Eden Florence Guill, TECHNICAL DIRECTOR AND FACILITIES MANAGER

Zoey Peacock-Jones, PRODUCTION ASSISTANT

Ayumu "Poe" Saegusa, RESIDENT LIGHTING DESIGNER

AUDIENCE SERVICES

Richard Stauffacher, AUDIENCE SERVICES MANAGER

FRONT OF HOUSE

Caleb Ouellete

Ciara Cornelius

Charles Shipman

Chloe Golding

Emilia Smithies

Emma Richmond

Hilarie Spangler

Lena Benita Jackson

PROTOTYPE

Sarah Bellin, FESTIVAL PRODUCER

Victoria Preis, MARKETING MANAGER

HERE SUPPORT

HERE is extremely grateful for the support and encouragement of the following group of foundations, corporations, government agencies, elected officials, and dedicated individuals. We would not be HERE without you.

FOUNDERS

Barbara Busackino
Tim Maner
Kristin Marting
Randy Rollison

BOARD OF DIRECTORS

Michael Champness
Abigail Gampel
Umar Haider
Fred Harris
Tim Maner
Kristin Marting
Kevin Matthews
Helen Mills

Alan Ostroff
Amy Segal
Robert Walport
Jennifer Suh Whitfield
Tommy Young

EX-OFFICIO

Barbara Busackino

HERE'S BOARD OF DIRECTORS COMMUNITY

HERE's Board of Directors is a diverse group of individuals who are artistically curious and endlessly passionate about supporting artists and artistic life in New York City.

A circle made up of both artists and arts advocates, the Board is not only charged with fiscal oversight, but with ensuring that HERE continues to live its mission and values. Deeply invested in HERE's commitment to anti-oppression and justice work, this group of individuals engage in deep conversations to steer the organization forward and contribute to a culture conducive to our goals.

They support HERE's vitality in numerous ways and are essential leaders in our City. If being a part of this important circle of our community is of interest to you or someone you know, please feel free to reach out to Producing Director Meredith Lynsey Schade at meredith@here.org.

GOVERNMENT SUPPORT:

HERE'S programming is made possible with Public Funds from: National Endowment for the Arts; New York State Council on the Arts with the support of the Office of the Governor and the New York State Legislature; New York City Department of Cultural Affairs in partnership with the City Council; the Offices of the Mayor of New York, Speaker Corey Johnson, Manhattan Borough President Gale Brewer, New York State Assembly Member Deborah J. Glick, and State Senator Brad M. Hoylman. We are extremely grateful for the support and advocacy of all of our dedicated elected officials: Senator Charles E. Schumer, Senator Kirsten R. Gillibrand, Representative Jerrold L. Nadler, Mayor Eric Adams, Manhattan Borough President Gale Brewer, Council Member Jimmy Van Bramer and the Cultural Affairs Committee of the City Council, State Assembly Member Deborah J. Glick, and State Senator Brad M. Hoylman.

PRIVATE AND CORPORATE SUPPORT PROVIDED BY:

Alliance of Resident Theatres/
New York
Bloomberg Philanthropies
Creative Capital
Cultural Services of the French
Embassy
Doris Duke Charitable
Foundation
Edison Properties
FACE Contemporary Theater Fund
Fund for the City of New York
GREEN / LIVE ARTS NYC
Howard Gilman Foundation
Hudson Square Properties
Jerome Foundation, Inc.

Jim Henson Foundation
JKW Foundation
Joseph and Joan Cullman
Foundation for the Arts
Leon Levy Foundation
MAP Fund
mediaThe Foundation
Mental Insight Foundation
Mertz Gilmore Foundation
New England Foundation for
the Arts
New York Community Trust
New York Foundation
for the Arts
OPERA America

Royal Little Family Foundation
Select Equity Group, Inc.
The Andrew W. Mellon
Foundation
The Association of Performing Arts
The Fan Fox and Leslie R.
Samuels Foundation
The Gladys Krieble Delmas
Foundation
The Jane Henson Foundation
The Roy Cockrum Foundation
The Scherman Foundation
The Shubert Foundation
Venturous Theater Fund of
the Tides Foundation
Virginia B. Toulmin Foundation

HERE receives generous support from:

EDISON PROPERTIES



HERE, in partnership with Resident Playwright Taylor Mac, is a participant in the Mellon Foundation's National Playwright Residency Program administered in partnership with HowlRound.

HERE is extremely grateful to the many generous individuals who support our programming! (includes donors as of July 11, 2022)

A NOTE ABOUT THE NEW STRUCTURE OF OUR DONOR LIST:

Community-Centric Fundraising is a fundraising practice that is grounded in equity; it calls on all non-profits to bring principles of racial and economic justice into our development strategies. As one small step towards aligning HERE with this model, we have removed giving levels from our donor list. We hope to celebrate and raise up all of our supporters no matter the size of their contribution and recognize the generosity of our community as a whole. We would like to thank the team of Community-Centric Fundraising for their leadership and their call to action; more information on CCF can be found on their [website](#).

Anonymous (60)	Sonal & Rohit Chopra Michele Clair & Michael F. Thomas Patricia Clair Janet D. Clancy Nick Clarke Eli Cohen Paul Collins Jane Comfort Karin Coonrod Amanda Cooper Cor Cordium, Inc. Kendall Cornell David Cote Laura Crow José Covarrubias Ameca Stephanie D’Abruzzo Lisa D’Amour Darlene Darrow Christian De Gre Joe Del Gaudio Janine DiTullio Jean Dommermuth Alexander Donnelly Courtney Donner Pamela Drexel Karen Eckhoff Dana Edell Jennifer Egan & David Herkskovits Jonathan Kalb Peggy Edersheim Kalb and Scott Kalb Bill & Connie Egelman Jeremy Ehlinger Diane Eisenstat Michael Emerson Nicole English Jason English Danielle Epstein Emily Erstling Ross Eutis Jody Falco & Jeffrey Steinman Josephine Falco Karen Falk & Michael S. Goldman Timothy Falotico Rima Fand Barbara Farah Christine Farrell Bertie Ferdman & Byron Au Young Roberta Fernandes Anne-Marie Fink & Brian Wu Fiordellisi Williams Family Foundation Garrett Fisher	James Fleckenstein Jeanne Fleming Dale & Don Franzen Nancy Friedman Joseph Gallo Abigail Gampel & David Bornstein Vallejo Gantner Joan Ganz Cooney Olga Garay-English Darrell George Andrea Gift John Gillespie Shomari Gilyard Mary Giudici & Nello McDaniel David Goldstein Katherine Gooch-Breault Russel Granet Fell Gray Holly Gwandtner & Nancy Heller Francis Greenburger Catherine Greenman & Richard d’Albert Annie Grossman Colleen Gulliver Jane Gullong Samantha Hacker Alexandra Haddad Judith & Umar Haider Thea Hambright David Hamlin Karen Hartman & Todd London Sally & Fred Harris Jonathan Greenwood Harrison Shirley Hatcher Marie C. Hayes Kelly Hayes Micozzi Bethany Haynes Joi & Lyell Haynes Kevin Heim Mila Henry Cheryl Henson & Ed Finn Lisa Henson Christine Herron Claude Hersh Elsie Heyrman Klumpner Anne Hiatt Leah M. Hoffman Carla Hoke-Miller Suli Holum & Trey Lyford Grace Hong Paul Hough John Howbert Tess Howsam	David Hume Kimberley Ima Charlotte Isaacs Jay Itzkowitz Jill & Bob Jaffe Andrew Jarcho Darin Johnson Ann Jones Melanie Joseph Mary & Gregory Juedes Kristy Kannapell Alicia Kaplan Tjeert Keijzer Lynda Kennedy Conor Kennedy & John Young Geoff Kessell Jeffrey Kessell Sarah Kershaw & Kevin Matthews Tanya Khordoc Andrea & Tyko Kihlstedt Jessie Kilguss Seth King Marian & Bob Klein Elysabeth Kleinhans Daniel Klingenstein Heather Klinkhamer Soomi Kim Frederick Knecht Henri Koenigsberg Fred Kolo Lydia Kontos Sarah & Victor Kovner Eugene Krishnan Kate Kruckemeyer Brad Krumholz Itamar Kubovy-Weiss Ming Kwang Gyongyu Laky Mahayana Landowne Aaron Landsman Matthew Landy David Latham Paula Lawrence Michelle Lee Ori Lefkowitz Paul Leibowitz Jean Leo Michael Levy David Libby Laurent Linn Anna & David Linder Peter Linz Kate Loewald Vida Jong Ann Marie Lonsdale Ivan Lustig Robert C. Lyons
Noah Aberlin Leah Abrams Leslee Asch Cassie & David Ackerman Bruce Allardice Craig Anderson Jessi Anderson Michelle Andonian Ed Anselm Joshua Babbitt Sarah Babski Elizabeth I. Banks Judy Barker Ann Bartek Jason Baruch Nathan Baugh Elton Beckett Eve Beglarian Warrick Bell Jennifer Belt Carolyn Benbow Ivan Bennett Jamie Bennett Patrick Benson Lori Benton Craig & Judy Berkley Susan Bernfield & Claude Millman Laurie Bernhard William Bernhard Glenn Bernston Roslyn Biskin Gavin Black Thomas Blessing IV Bloomberg Philanthropies Steven Borecki Louis Borodinsky Marc Bovino Antonia Bowring Bill Bragin Kate Brehm Erin Wegner Brooks Christopher Burney Thomas Cahill Kevin Callahan William Carden Brian Carson David Chapin Hilary Chaplain Lesley & Michael Champness JoAnne Chernow Marissa Chibás & Travis Preston Phyllis & Daryl Chinn			

Noel MacDuffie
 Justin Madden
 Anne Maltz
 Tim Maner
 Nina C. Mankin
 Mark Markowski
 Lesley Martin
 Leeda Marting
 Linda Mason
 John MacGregor
 Laura Mackall
 Merio Maye
 Peter McCabe
 Mary McCormick
 Donna McCoy
 Patrick McEvoy
 Karen McLaughlin &
 Mark Schubin
 Alexander Duell
 McMahon
 Timothy McDonald
 Tina Meltzer
 Hillary Miller
 Helen J. Mills & Gary N.
 Tannenbaum
 Garrett Mitchell
 Mamacita Social Aid
 Pleasure Club, Inc.
 Cynthia Morales
 Michael Moran
 J.P. Morgan Private Bank
 John Morning
 Brian Mountford
 Music and Mentoring
 House
 Anne Myers
 Roxanna Myhrum
 Ruben Naeff
 Alexandra & Ed Napier
 Hemmendy Nelson &
 Oliver Karlin
 Dennis Neveling
 Wendy Norris
 Steve Norton
 Anna & Alan Ostroff
 Seb Pade
 Rebekah Paine
 Ellen Page
 Jonathan Palmer
 Sanjay Patel
 Arienne Pelletier
 Shannon Pendleton
 Megan Penelope
 Carole Pesner
 Giverny Petitmermet
 Courtney Pettersen
 Isabel & Steven Phillips
 Eva Pinney
 Jill Piscatella
 Laurie & Michael Pollock
 Kristin Pomeroy
 Catherine Porter & Barry
 Rowell
 Eva Pou
 Leonora Prowell
 Anna & Martin
 Rabinowitz
 Mandie Rapoza
 Susan Rauffer
 Aaron & Pixy Ray-
 Crichton
 Kristine Louis Reynal
 Mark Reisman
 Josh Reisner
 Sandye Renz
 Shane Resmon
 Scott Richards
 Amanda K. Ringger
 Jeff Rosen
 Barry Rowell
 Adam Rubinstein
 Max Sarkowsky
 Jaynie & Chad Saunders
 Tiller
 Hanne Tiereney
 Claire & George Schade
 Alene Schneierson
 Scholastic
 Allison & Gary Schwartz
 Gavin Scotti
 James Scruggs
 Amy Segal
 Jennifer Seifter
 Randall Sell
 Brian Selznick & David
 Serlin
 Lee Selznick
 Roslyn Selznick
 Sesame Workshop
 Lucy Sexton
 Anne & Michael Shaw
 Aneesa Sheikh
 Julie Shelton-Grimshaw
 Kelly Shenk
 Dixie M. Sheridan
 Yoko Shioya
 Lorin Silverman
 Angie Simmons
 Griffin Skutsch
 Robert Sloan
 Justin Smith
 Niegel Smith
 Onalivia Smith
 Andrew Solomon &
 John Habich Solomon
 Holly Spector
 Rachel Stapleton
 Peggy Stafford & Mike
 Shapiro
 Sonya Sobieski & Robert
 Davenport
 Deborah Stein & Andy
 Horwitz
 Olga Stein & Andrew
 Brown
 Leonard Steinbach
 Jennifer Steingart
 Melissa Steineger
 Carol Sterling
 Susan Stevenson
 Borowitz
 Maria Striar
 Steve Strickland
 Jennifer Suh Whitfield &
 Benjamin Whitfield
 Elizabeth A. Sullivan
 Kerry Sulski
 Suzi Takahashi
 Susan Talcott Camp
 Brenna Thomas &
 Nicholas Jaeger
 Patrick Thomas
 Alex Timbers
 Jack Tringo
 Susie Tofte
 Daniella Topol
 Tow Foundation
 Steven Usdan
 Dan Urness
 Wendy van Heuvel
 Cheryl Van Hooven
 Constance Vecilla
 Vicky Virgin
 Jacob von Conrady
 Voyage Theater
 Company
 Vince Wadhvani
 Colin Waitt
 Carol & Robert Walport
 Thomas Samuel Walport
 Stephen Walton
 Philippa Wehle
 Stefan Weisman
 Martha Wilson & Vince
 Bruns
 Micky Weller
 Kim Whitener
 Regina Wickham
 Douglas Wieselman
 Sarah Wigley
 Jaime Wolf
 Erika & Alexi Worth
 Giverny Yau
 Paul Yau
 Tommy Young
 Paul David Young
 Francine Zerfas
 Mary Zikos
 Paul Zimet
 Ariel Zurofsky

MEMBERSHIP

BE PART OF IT ALL!

Our membership program has been reimagined for our new season. It now includes extensive access to NEW digital and in-person premieres of new work and other ways to engage with HERE artists and support this NYC home for artists and adventurous audiences.

BENEFITS INCLUDE
INSIDER ACCESS
EXCLUSIVE VIDEOS
VIRTUAL GATHERINGS
AND MORE...

Contact Isabella Rivera Ruiz:
212.647.0202 x 327
isabella@here.org
OR
visit [here.org/support](https://www.here.org/support)
For more information

FOLLOW US ON


 **HERE ARTS CENTER**

 **@HEREARTS**

 **HEREARTS**

#HERERAW2022

Thank you for coming to *HERE RAW: A Meal*. If you have a moment, please consider filling out the quick survey below:



**CLICK HERE
FOR THE SURVEY!**

HERE is a proud member of the



&



&

THE NATIONAL OPERA CENTER
AMERICA

&

