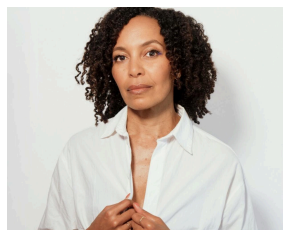


What to expect when attending a performance of  
THE ESSENTIALISN'T  
at  
HERE Arts Center  
THE ESSENTIALISN'T

**SYNOPSIS:** Through experiencing the show, THE ESSENTIALISN'T, Eisa Davis invites audience members to consider the question, *Can you be Black and not perform?* Incorporating art gallery aesthetics and an electronic soul score, Eisa Davis performs a piece about performance, exploring the cultural techniques that make musical expression a kind of imprisonment – or a transcendent liberation.

**CHARACTER GUIDE:**

The main performers in this show are:



Eisa Davis



Princess Jacob



Jamella Cross

The run time, or expected length, of this show is 90 minutes.

This show will take place in the Mainstage at HERE Arts Center.

Audience members are welcome and encouraged to walk around and explore the space before taking their seats.

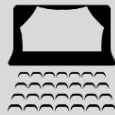
There will be a limited number of seats reserved for Seats on the Spectrum, indicated by paper signs marked as "reserved." There will be fidget tools available for patron use.

They will be located in a container in the lobby, as well as in a container downstairs in the designated break area. Please return the fidget tools to the container after the performance.

Shows use different theatrical elements to help tell the story. In this show,

### **Actors Interacting with the Audience**

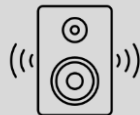
In this performance, the actors may talk to or come close to the audience.



(Please note that actors will not touch audience members. The actors will ask the audience to sing along at a specifically indicated moment in the performance. Audience members may choose not to participate)

### **Loud music and/or Bass**

This show will contain loud music or bass elements. You may feel the vibration from these elements.



### **Crowd Noise**

At most shows you will hear other audience members applauding/clapping and cheering at the end of scenes or at exciting portions of the show.



### **Loud and/or Sudden Noise**

At times during the show, there will be loud noises which may be unexpected



### **Flashing Lights**

There will be portions of the show where lights will flash or a strobe effect will be used.



(Strobe lights will flash after the song, Ribonucleic Acids)

### **Intense Visuals**

You may see bright colors, complex patterns or fast moving visuals/projections.



### **Sudden Changes in Lighting**

At points during the show, the lights may become dim or brighten suddenly. There may be times when lights are pointed toward the audience momentarily and will appear very bright.



### **Intense Emotions**

Some of the characters will show intense emotions like sadness, fear, anger and joy. You may see the actors crying, wailing or yelling to show what the character is feeling. This is all to help tell the story.



### **Arguments**

At times the characters may argue with or yell at each other which is all part of the show.



### **Physical Fighting**

Actors will engage in what looks like physical fighting to help tell the story, but this is not real and is all part of the show.



### Sensitive content includes:

There will be a tank of water onstage, which an actor will be submerged in. The actor will be safe.

Cursing, experiences of racism recollected through music and unreality. This content is in service of exploring the central question, *Can you be Black and not perform?*

—

### **What To Expect from Your Experience at HERE:**

The box office is located in the lobby at HERE Arts Center. Feel free to direct any additional questions not covered by these narratives to the box office staff.

Seating information: All seats are general admission. However, there will be a limited number of seats reserved for SEATS ON THE SPECTRUM, indicated by paper signs marked as "reserved." In order to reserve a SEATS ON THE SPECTRUM ticket, please select your desired ticket price, then select SEATS ON THE SPECTRUM as an add-on at checkout.

There are two all gender bathrooms, one containing only stalls and one with urinals and stalls, located down the stairs and to the left.

### **Venue information:**

The lobby and box office will open two hours before the show starts.

In the lobby area you can also find:

- The box office.
- Couches, tables and chairs to sit.
- A bar with alcoholic and nonalcoholic beverages and snacks available for purchase.
- There will be a house manager present who can answer any questions. They will not be inside of the theater throughout the performance — should patrons need anything during the show, please exit the theater and find the house manager.

The mainstage theater is located on the ground floor. Please alert the box office manager or the house manager should an accessible entrance be needed. For reference, the accessible entrance is located on 6th ave, just around the corner from the main entrance on Dominick St.

**Lobby activities:**

Film will be projected in the lobby, accompanied by sound.

In the main space, there will be a ballot box to interact with, and audience members are invited to walk around the vestibule before taking their seats.

The red couch downstairs (across from the restrooms) can be utilized as a designated break area. Please note that people will likely pass through the area to use the bathrooms or file in for a show in our downstairs theater.

**If there are any questions about these elements of the show or additional information is needed, please contact the box office by calling (212) 647- 0202 or emailing [tickets@here.org](mailto:tickets@here.org).**

**We look forward to seeing you at**

THE ESSENTIALISN'T.



This template was developed by Anderson Center Consulting & Training for Seats On The Spectrum.

